

Jupio Battery Grip JBG-N013

Instruction Manual

Introduction

Thank you for your purchase of the Jupio JBG-N013 multi-power battery pack for use with all Nikon digital cameras that list the JBG-N013 / MB-D15 as a compatible accessory in the camera manual. The JBG-N013 needs one EN-EL15 rechargeable Li-ion battery or six AA batteries (alkaline, Ni-MH, or lithium) and includes an alternate shutter-release button, AE-L/AF-L button, multi selector, and main and subcommand dials for taking pictures in "tall" (portrait) orientation. The camera menu options allow the user to choose whether the camera battery or the batteries in the JBG-N013 are used first; see the camera manual for details.

Safety Precautions

To ensure proper operation, read this manual thoroughly before using this product. After reading, be sure to keep it where all those who use the product can see it.

Notice for Customers In Europe

CAUTION
RISK OF EXPLOSION IF AN INCORRECT TYPE REPLACES BATTERY. DISPOSE OF USED BATTERIES ACCORDING TO THE INSTRUCTIONS.

This symbol indicates that this product is to be collected separately. The following apply only to users in European countries:

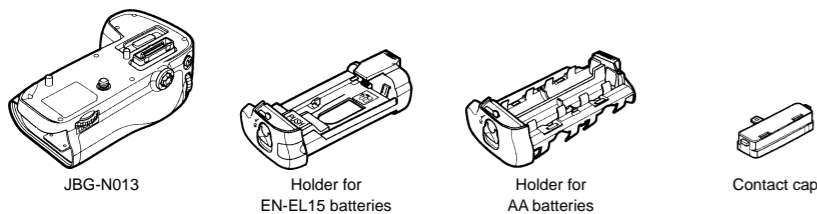
- This product is designated for separate collection at an appropriate collection point. Do not dispose of as house-hold waste.
- For more information, contact the retailer or the local authorities in charge of waste management.

Precautions for Use

- The JBG-N013 is for use with compatible cameras only.
- Do not use with batteries and battery holders not recommended in this manual.
- To prevent electrical shorts caused by metal objects touching the power terminals, replace the contact cap when the JBG-N013 is not in use.
- When a battery holder is removed from the JBG-N013, remove the batteries or place the holder or cover in the holder case to prevent electrical shorts caused by contact with other metal objects.
- The memory card access lamp may light up when the JBG-N013 is attached or removed from the camera, but this is not a malfunction.
- Should you notice smoke or an unusual smell or noise from the battery pack, discontinue use immediately. After removing the batteries, take the device to the retailer or a Nikon-authorized service representative for inspection.
- The JBG-N013 is not equipped with a power switch. Use the camera power switch to turn the power on or off.

The JBG-N013 and Accessories

Confirm that the following items are supplied with the JBG-N013 (batteries are sold separately).



The holder is inserted in the JBG-N013 at shipment. See "Inserting Batteries" for information on removing the battery holder.

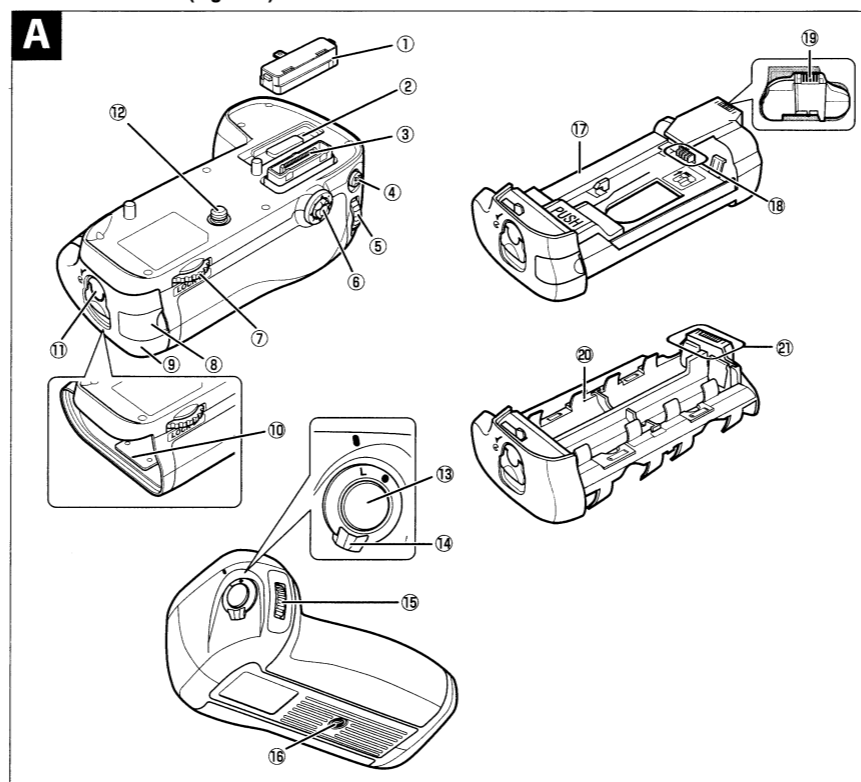
Using an AC Adapter and Power Connector

The optional EH-5b AC adapter and EP-5B power connector provide a reliable power source when the camera is used for extended periods. To use an AC adapter with the JBG-N013, insert the EP-5B into the battery holder as described in "The EP-5B Power Connector" (below) and then connect the EH-5b as described in the documentation provided with the EP-5B.

JBG-N013 Controls

The JBG-N013 is equipped with a shutter-release button (Figure A-13), multi selector (Figure A-7), main command dial (Figure A-5), sub-command dial (Figure A-15), and AE-L/AF-L button (Figure A-4) for use when taking photographs in vertical ("tall" or portrait) orientation. These controls perform the same functions as the corresponding controls on the camera and are affected by changes to options in the Custom Settings menu (Group f) that affect these camera controls. See the camera manual for more information.

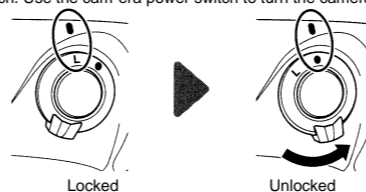
Parts of the JBG-N013 (Figure A)



1> Contact cap. 2> Contact cover holder. 3> Power/signal contacts. 4> AE-L/AF-L button. 5> Main command dial. 6> Multi selector. 7> Attachment wheel. 8> Holder power connector cover. 9> Battery-chamber cover. 10> Battery chamber. 11> Battery-chamber latch. 12> Mounting screw. 13> Shutter-release button. 14> Control lock. 15> Sub-command dial. 16> Tripod socket. 17> holder for EN-EL15 batteries. 18> Power terminals. 19> Power terminals (battery holder). 20> holder for AA batteries. 21> Power terminals (battery holder).

The JBG-N013 Control Lock

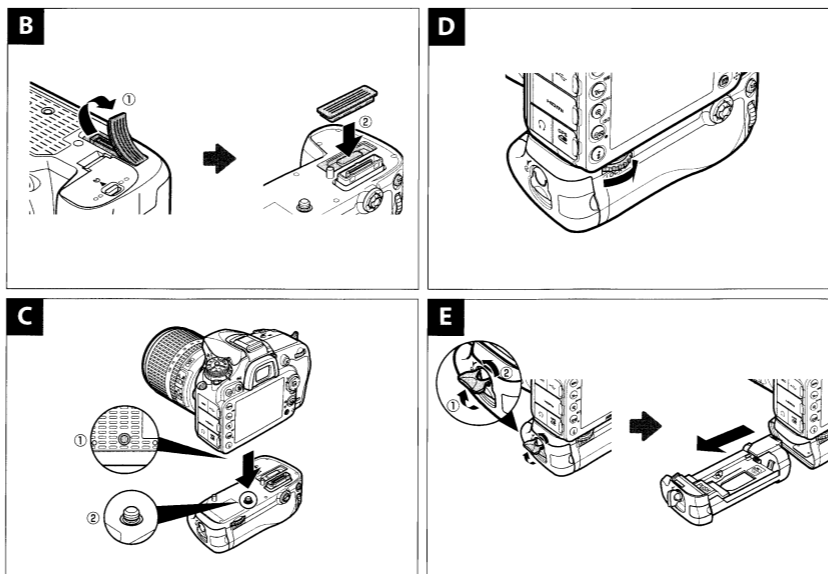
The control lock (Figure A-14) locks the controls on the JBG-N013 to prevent unintended use. Before using these controls to take photographs in vertical (portrait) orientation, release the lock as shown. The control lock is not a power switch. Use the camera power switch to turn the camera on and off.



Using the Battery Pack

Before attaching the battery pack, be sure that the camera is off and that the JBG-N013 control lock (Figure A-14) is in the L position.

- 1 Remove the contact cap (Figure A) from the battery pack.
- 2 The contacts for the JBG-N013 are in the base of the camera, where a contact cover protects them. Remove the contact cover as shown in Figure B) and place it in the contact cover holder on the JBG-N013 (Figure B).
- 3 Position the JBG-N013, keeping the JBG-N013 mounting screw (Figure C) aligned with the camera tripod socket (Figure C) and tighten the attachment wheel by rotating it in the direction shown by the **LOCK** arrow (Figure D). There is no need to remove the battery from the camera before connecting the JBG-N013. At default settings, the battery inserted in the camera will be used only after the battery in the JBG-N013 is exhausted. The **Battery order** option in the camera Custom Set-tings menu (Group d) can be used to change the order in which the batteries are used.



Be sure to place the camera contact cover in the contact cover holder and to keep the JBG-N013 contact cap in a safe place to prevent loss. A PB-6D and PK-13 auto extension ring are required when using PB-6 focusing attachment with the JBG-N013.

Removing the Battery Pack

To remove the JBG-N013, turn the camera off and set the control lock on the JBG-N013 to **L**, then loosen the attachment wheel by rotating it in the direction opposite to that shown by the **LOCK** arrow and remove the JBG-N013.

Inserting Batteries

The JBG-N013 can be used with one EN-EL15 rechargeable Li-ion battery or with six AA batteries.

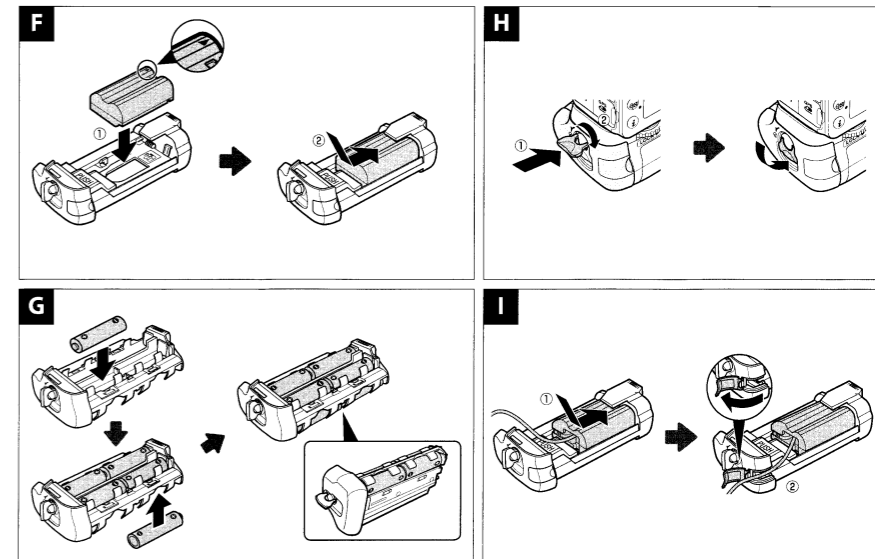
Before inserting batteries, be sure that the camera is off and that the JBG-N013 control lock is in the **L** position.

1 Unlatch the JBG-N013 by rotating the battery-chamber latch to **C** and remove the battery holder (Figure E).

2 Ready the batteries as described below.

EN-EL15: Matching the indentations on the battery to the projections on the holder, insert the battery with the arrow (▲) on the battery toward the battery holder power terminals (Figure F). Press the battery lightly downward and slide it in the direction of the arrow until the power terminals click into place (Figure F).

AA batteries: Place six AA batteries in the battery holder as shown in Figure G, making sure that the batteries are in the correct orientation.



3 Insert the battery holder in the JBG-N013 and close the battery-chamber cover (Figure H). Make sure the holder is inserted before turning the latch.

4 Turn the camera on and check the battery level in the control panel or viewfinder as described in the camera manual. If the camera does not turn on, check that the battery is correctly inserted.

For more information, see the camera manual.

The EP-5B Power Connector

When using the EP-5B power connector, insert it into the holder with the arrow (▲) on the connector toward the battery power terminals. Press the connector lightly downward and slide it in the direction of the arrow until the power terminals click into place (Figure I). Open the holder power connector cover and pass the EP-5B power cable through the opening (Figure I).

Removing Batteries

Be careful not to drop batteries or the holder.

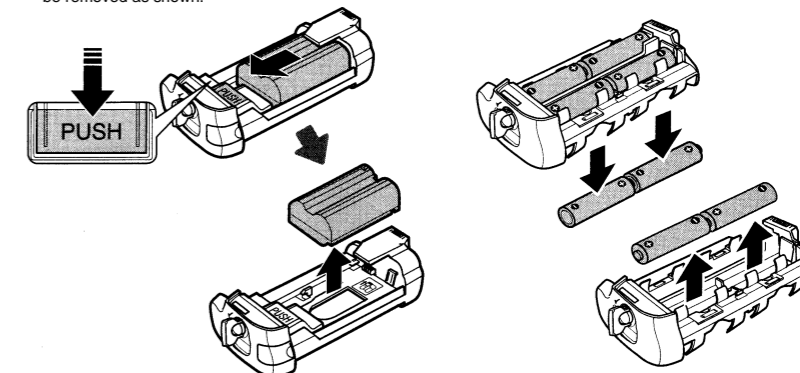
1 Unlatch the JBG-N013 by rotating the battery-chamber latch to **C** and removing the battery holder (Figure E).

2 Remove the battery or batteries from the holder.

EN-EL15: While pressing the holder **PUSH** button, slide the battery toward the button. The battery can then be removed as shown.

The procedure for removing the EP-5B power connector is the same as that for the EN-EL15.

AA batteries: Remove the batteries as shown. Be careful not to drop the batteries when removing them from the holder.



Specifications

Power source	One EN-EL15 rechargeable Li-ion battery, six alkaline, Ni-MH, or lithium AA batteries, or EH-5b AC adapter (requires EP-5B power connector)
Operating temperature	0°C ~ 40°C
Dimensions (W x H x D)	Approx. 138.5x50.5x76mm
Weight	Approx. 340g

Specifications and design are subject to change without notice.

Jupio Europe b.v.
Wasaweg 27
9723 JD Groningen
The Netherlands
www.jupio.com